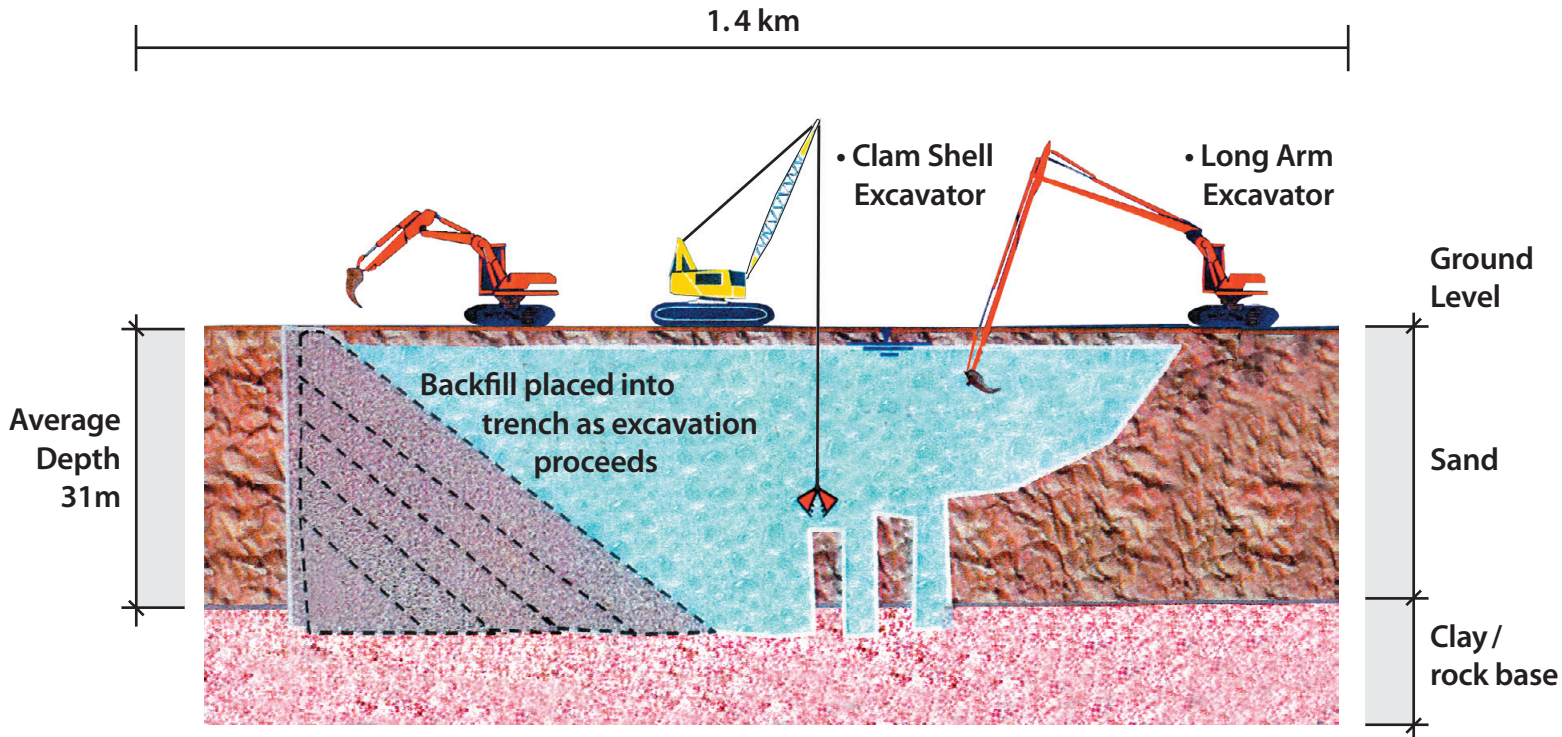


Elevation of Barrier Wall

Sectional view along the centre line of the trench



- Heavy machinery digs a deep narrow trench using clam shell and long arm excavators.
- The trench, which is less than 1 metre wide but up to 45 metres deep, is filled with bentonite slurry above the ground water level. This supports the open trench in water charged soil.
- The impermeable wall is then built up in the trench with the introduction of water resistant backfill, which displaces the slurry.
- This wall is keyed into the existing bed of clay and rock to prevent the movement of ground water across the site.