



*Artist impression of new public domain to be constructed in 2020 - Worth Place Park West.*

# HONEYSUCKLE IS CHANGING

## Welcome to the summer edition of the Honeysuckle Update.

Hunter and Central Coast Development Corporation is providing an update of the significant changes underway to bring the next stage of the Honeysuckle Urban Renewal Project to fruition. As more construction sites commence work, we want to ensure you are aware of the changes and can still easily navigate into and around the precinct. You'll soon see the benefits of these works which include a new public park at Worth Place and a realigned Honeysuckle Drive.

## WORTH PLACE PARK WEST CONSTRUCTION COMMENCING SOON

Landscaping works to improve Worth Place Park West are due to commence in early 2020. The enhanced space will feature a wide promenade, an undercover BBQ area, new trees, lawn, shaded seating along the harbour foreshore and sandstone steps to the water's edge.

The park will connect to the existing Honeysuckle foreshore at Worth Place and is adjacent to Lume apartments. The park is expected to open in the middle of next year.

You can keep up to date with project works on our website, [hccdc.nsw.gov.au/honeysuckle](http://hccdc.nsw.gov.au/honeysuckle)



Hunter & Central Coast  
Development  
Corporation

Summer 2019



# SEEKING A NEW TENANT FOR THE WHARF

We're looking for a new tenant for the Lee Wharf A building, in the heart of Honeysuckle's dining and entertainment precinct. Renamed 'The Wharf', this much-loved building on the water presents a unique opportunity for a new offering in Honeysuckle that brings activity and complements what the precinct already has on offer.

The Wharf was built in 1910 in the federation style and features high ceilings with exposed timber beams. It boasts a rich history, including life as an immigration centre, wool storage shed, cargo port and Maritime Museum. Over the past 12 months, we have invested significantly in restoration and maintenance works that sure-up the building's character and future use. Repairs have been made to the building's foundations and harbour seawalls, and the original wharf deck has been reinstated, providing greater connection to the water.

We're looking for an experienced operator who has a track record of delivery and can offer an exciting and viable new use for the site. We are offering the site for lease through a Call for Proposal process, closing on 6 February 2020.

For more information, visit  
[hccdc.nsw.gov.au/TheWharf](http://hccdc.nsw.gov.au/TheWharf)



*Artist impression of potential future use of The Wharf showing the new deck and interior.*

## SEAWALL REPAIRS

Seawall repairs along the Honeysuckle waterfront are progressing to plan and so far we have recycled 2,000 tonnes of concrete and placed 54,000 tonnes of rock into the harbour.

These works will enable the creation of new public domain in Honeysuckle, including the extension of the harbourside path from Wickham Marina, through Honeysuckle, to Merewether. Once completed, Novocastrians will be able to walk approximately 10 km along the harbour foreshore, creating one of the most picturesque harbourside walks in the country.

**We expect to complete the seawall works late 2020.**





# CONSTRUCTION UPDATES

## Work starts at 35 Honeysuckle Drive

Construction has commenced on the 88-apartment Huntington development at 35 Honeysuckle Drive. Huntington features a fully landscaped rooftop garden as well as more than 1100m<sup>2</sup> of mixed-use retail, restaurant and café space.

Construction is expected to employ up to 1000 people, with 120 workers on site at peak times. A further 50 long-term jobs are expected to be created by the retail and hospitality spaces. The development is expected to be completed by mid 2021.



*Gavin Edgar DOMA Group, Valentina Misevska, HCCDC and Maurizio Rosin, BLOC welcome the commencement of construction at 35 Honeysuckle Drive.*

## University breaks ground at Honeysuckle

The University of Newcastle has started enabling works onsite for Stage 1A of the Honeysuckle City Campus.

This building will house the Honeysuckle Innovation Hub, a joint funding initiative with the NSW Government as part of the Hunter Innovation Project. It will also offer expanded teaching, learning and research facilities for the School of Creative Industries.

First steps involve completing mine grouting works in accordance with recommendations from Subsidence Advisory NSW. The Stage 1A Building is likely to be completed in the first quarter of 2021.

## Little National Hotel

Doma Group has announced changes to the design for the Little National Hotel project on Honeysuckle Drive. While initial approval was obtained for a hotel with residential apartments, new designs have been unveiled for a commercial office building to accompany the hotel.

The revised design will take advantage of high demand for office space in Newcastle and current market conditions. Construction on this site is on hold while the plans for the new scheme are approved.

# RECENT OPENINGS

## Newcastle welcomes another green space

If you've walked between Honeysuckle and Hunter Street recently, you might have been pleasantly surprised by our most recent delivery of public domain with Museum Park, the transformation of the former Civic Station.

With new lawns, trees, gardens and seating, Museum Park creates an inviting pedestrian connection between the waterfront and the CBD, and makes it easier to get to Newcastle Museum, light rail and the existing and future University of Newcastle campus.

The project showcases and celebrates the site's heritage, including renovations to the former station building and repurposing material from the demolished footbridge throughout the landscape. The design of the park aligns with feedback from community consultation that took place in late 2016.

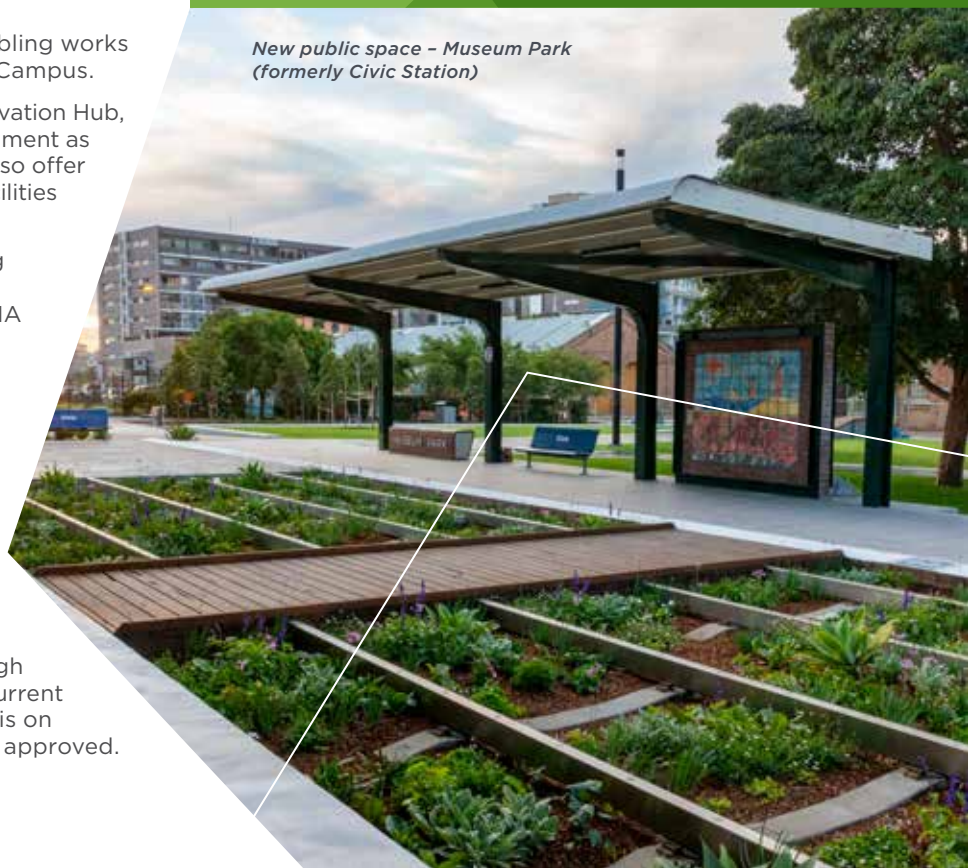
## Steel Lane car park

More car parking is now available in the Newcastle CBD, with new permanent spaces available in Steel Lane, near the Honeysuckle Light Rail stop. The car park has 66 spaces, including accessible parking and motorcycle spaces. The new spaces provide easy access to light rail, Honeysuckle, the Hunter Street TAFE campus and NSW Department of Health building.

Parking is paid and timed at four hours, making more spaces available for short-term visitors.

We've also worked with TAFE NSW to landscape the space between Kuwumi Place and the light rail stop to create another green space on the former corridor.

*New public space – Museum Park (formerly Civic Station)*





Road realignment and temporary paths.

## HONEYSUCKLE DRIVE REALIGNMENT WORKS TO COMMENCE IN NEW YEAR

Work to realign and upgrade Honeysuckle Drive will start in early 2020. Straightening Honeysuckle Drive will ultimately improve traffic flow and assist with flood mitigation at Cottage Creek. We're also widening the road, adding a soft median strip and planting trees in the median strip. First steps include relocating some in-ground services and changing the configuration of the Throsby car park which will mean the loss of some car parking spaces during construction. Changes will also accommodate temporary traffic movements.

Honeysuckle Drive will remain open during the works although the speed limit will be reduced along approximately 400m of road during works. Vehicles will be diverted on a temporary road to the north of

Honeysuckle Drive, while pedestrians and cyclists will have a dedicated path to follow alongside the temporary road.

Construction will be limited to 6am - 6pm Monday to Friday and from 8am - 3pm on Saturday. Signage will communicate any diversions, and up-to-date information will be provided on our website, by letterbox drop or email to ensure minimal disruption.

**If you would like to keep up-to-date with work notifications and updates, email [honeysuckle@hccdc.nsw.gov.au](mailto:honeysuckle@hccdc.nsw.gov.au) and request to receive communications from HCCDC. We will only communicate on relevant topics as and when necessary.**

Honeysuckle  
is experiencing  
the next stage  
of transformation.

### STAY UP TO DATE

To keep informed of what's changing in Honeysuckle, register your email at [honeysuckle@hccdc.nsw.gov.au](mailto:honeysuckle@hccdc.nsw.gov.au)

 Honeysuckle NSW

[www.hccdc.nsw.gov.au](http://www.hccdc.nsw.gov.au)