



*HCCDC attracts Hope at Honeysuckle.  
From L to R: the Hope family; Michael, Sam, Karen  
and Jonno Hope with HCCDC's Valentina Misevska.*

# HONEYSUCKLE IS CHANGING

## Welcome to the Winter edition of the Honeysuckle Update.

Despite the challenges COVID-19 has presented in our community, progress continues to be made with the revitalisation of the Honeysuckle precinct.

Final touches are now in place at Doma Group's Lume development, with tenants now moving into the apartments. The upgrade of Honeysuckle Drive incorporating the widening of footpaths and realigned roadway is also progressing smoothly, with project works concentrating on Cottage Creek bridgeworks and road and pavement preparation.

We're also excited to announce a new tenant for the beautiful heritage Lee Wharf A building in the heart of Honeysuckle.

## INTRODUCING HOPE AT HONEYSUCKLE

HCCDC is pleased to announce an exciting new tenant for Honeysuckle, with Hope at Honeysuckle signing a long-term lease with HCCDC to occupy The Wharf site.

HCCDC took The Wharf building to market in late 2019 with the aim of attracting a drawcard destination to enhance the Honeysuckle offering for locals and visitors to enjoy, both day and night.

Hope Estate has long been synonymous with fine wines, beautiful food and great entertainment, and now Newcastle residents and visitors to the City can enjoy the distinctive Hope offering a little closer to home.

Acting Chief Executive Valentina Misevska said Hope at Honeysuckle was a fantastic concept that the community can truly look forward to enjoying.

"We are really delighted to announce that Hope Estate will be coming to Honeysuckle with their creative offering that will no doubt appeal to locals, tourists, students and more.

*Continued over page...*



Hunter & Central Coast  
Development  
Corporation

Winter 2020



...continued from page 1

“We were pleased with the response to our call for proposals, and we are delighted that the proponent is an operator with a great local track record that really knows how to do food, wine and entertainment exceedingly well.”

Making the most of the heritage building and its on-water location, Michael Hope and his team will create a drawcard destination with a cellar door, providore retail, restaurant and dining options.

“We want to bring something special to Honeysuckle that showcases the amazing produce of the Hunter Valley, including food, wine, beer and spirits.

“We also want people, both local and visitors alike, to engage with us and enjoy a unique experience, which may be a wine tasting, masterclass or a beer matching experience.”

Hope at Honeysuckle follows HCCDC's recent \$4.7 million restoration works to repair the heritage fabric of the building, including significant underwater works to the substructure, and reinstatement of a 900m<sup>2</sup> outdoor deck over the waterfront.

## HCCDC MAKING CONNECTIONS TO THE CITY

HCCDC is leading \$10 million in essential infrastructure works to straighten Honeysuckle Drive and improve the surrounding streetscapes as the precinct continues to evolve.

Upgrading Honeysuckle Drive between Hannell Street and Steel Streets and replacing Cottage Creek bridge will allow for a wider road, new safer transition lanes, bike paths, landscaping and parking in some sections.

The replacement of the Cottage Creek Bridge also achieved a milestone recently, with the old structure demolished and concrete abutments poured to allow for the construction of the bridge span. In the coming months the project will concentrate on the formation of the bridge superstructure and road pavement preparation.

Once completed, the new bridge will showcase the natural asset, as well as reduce flooding risk to the area. The entire project is on target to be completed by December 2020.



Cottage Creek Bridge being built across Honeysuckle Drive

## OUR COMMUNITY, DELIVERING CHANGE

Newcastle is well known for its talented people that contribute in different ways, shapes and forms to the transformation of our city.

In this update, we are pleased to profile Dr John Mullard, who is the Principal Engineer, Lindsay Dynan engaged by HCCDC to steer essential engineering works in the Honeysuckle West precinct. We talk to John about his role and what he loves about the transformation of Newcastle.

**Q:** Hi John! Can you tell us how long you have lived in Newcastle?

**A:** Other than short working stints in Sydney and Darwin, I was born and grew up in Newcastle – I absolutely love the place.

**Q:** What is your role in the Honeysuckle West development?

**A:** My most recent role is Principal Engineer, working for HCCDC by overseeing projects including; the Honeysuckle Drive Upgrade, new Cottage Creek Bridge, public promenade, construction engineering for new seawalls and advising on road and pedestrian changes throughout works.

**Q:** What are you most proud of in relation to the Honeysuckle projects?

**A:** I feel a great sense of achievement with my involvement in the Honeysuckle Precinct – it's a complex site from an engineering perspective and I'm proud of how our team, and the wider team have consistently shared information and worked collaboratively displaying a passion for improving the area. That makes me proud to be a Novocastrian.

**Q:** What excites you most about the change taking place in Honeysuckle and across broader Newcastle?

**A:** The re-invention of the Honeysuckle precinct from industrial land to publicly accessible space with direct access to the Harbour. It's an exciting project that will be able to be enjoyed by our community for decades to come. Along with other initiatives such as the opening of the rail corridor and the Bathers Way project, we are transforming Newcastle into a truly world class city.

## SEAWALL REPLACEMENT COMPLETE

A major seawall project, replacing decades-old maritime infrastructure to pave the way for enviable waterfront promenade in Honeysuckle has now been completed.

Over the last two years, 177,000 tonnes of rock have been placed along the harbour's edge, over 500 metres of wharves and seawalls were upgraded or replaced using locally quarried rock and 8000 tonnes of concrete demolished and recycled into new seawalls.

The completion of the project creates a foundation for a new harbourfront public domain and wide public walkways in the coming years.

HCCDC looks forward to delivering exciting public spaces connecting the city and rivalling iconic coastal seawalks along the Eastern seaboard.



Dr John Mullard  
Principal Engineer,  
Lindsay Dynan



# CONSTRUCTION UPDATES



*Horizon on the Harbour*

HCCDC continues to work with community and industry stakeholders to lead the transformation of Honeysuckle and its surrounding precincts. Here's a short update on some of these projects.

## City Campus Construction underway

Construction is now underway on the first stage of the The University of Newcastle's Honeysuckle City Campus, School of Creative Industries and Innovation Hub after the Department of Planning, Industry and Environment 'fast-tracked' the campus construction approval. The four-story building will be situated on the corner of Worth Place and Honeysuckle Drive and will strengthen the University's presence in the Newcastle CBD.

## Horizon on the Harbour Approval

The Department also recently announced approval of the 5600-square metre development at 45 Honeysuckle Drive, known as Horizon on the Harbour as part of the Minister for Planning and Public Spaces 'fast-tracked' planning approvals.

HCCDC sold this site and is pleased to see the project move towards construction. The high-quality waterfront development by Miller Property and Canberra builder BLOC sits between Cottage Creek and Doma Group's Huntington Apartments, and will include architecturally designed residential apartments and ground floor retail spread across three buildings.

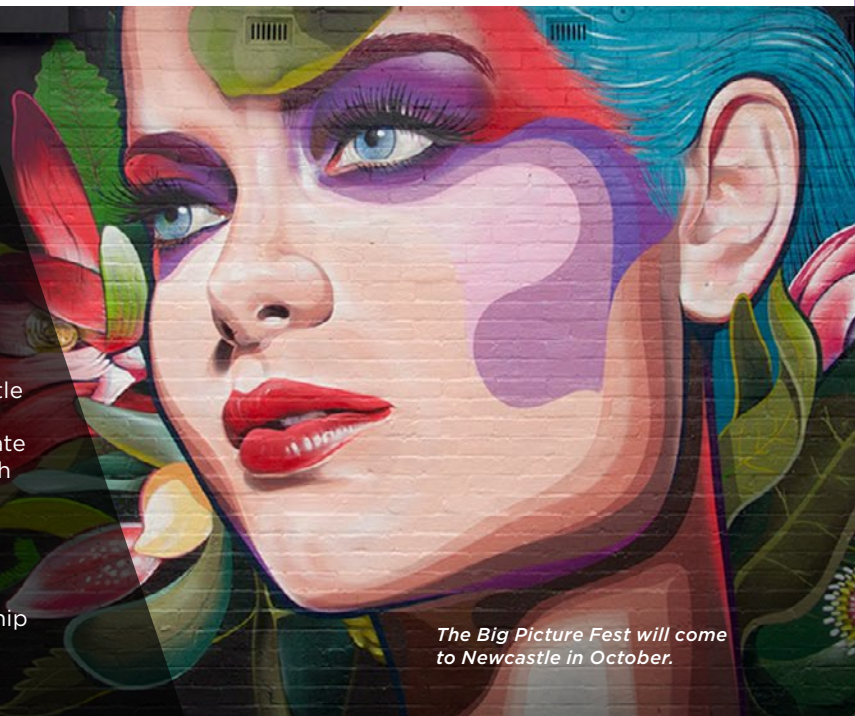
The development has commenced sales with registration of interest now open and construction is earmarked to commence in 2021.

# SUPPORTING THE BIG PICTURE FEST NEWCASTLE

HCCDC supports local initiatives that enhance and celebrate the communities of the Hunter and Central Coast regions.

HCCDC recently announced sponsorship of The Big Picture Fest Newcastle. Together with City of Newcastle and Newcastle Afoot, we are bringing this major international street art festival to Newcastle to celebrate Newcastle's history and creative culture from 2nd - 4th October 2020. Keep an eye on our Facebook page for more information on this exciting event!

Do you have an event that may be suitable for HCCDC sponsorship? Review the information on our website, [www.hccdc.nsw.gov.au](http://www.hccdc.nsw.gov.au) check you meet our sponsorship criteria and make a submission.



*The Big Picture Fest will come to Newcastle in October.*

Honeysuckle  
is experiencing  
the next stage  
of transformation.

## STAY UP TO DATE

To keep informed of what's changing in Honeysuckle, register your email at [honeysuckle@hccdc.nsw.gov.au](mailto:honeysuckle@hccdc.nsw.gov.au)

 Honeysuckle NSW

[www.hccdc.nsw.gov.au](http://www.hccdc.nsw.gov.au)