

Honeysuckle Park

FACT SHEET



*Honeysuckle Park – an exciting new public space that everyone can enjoy.
Artist's impression.*



Overview

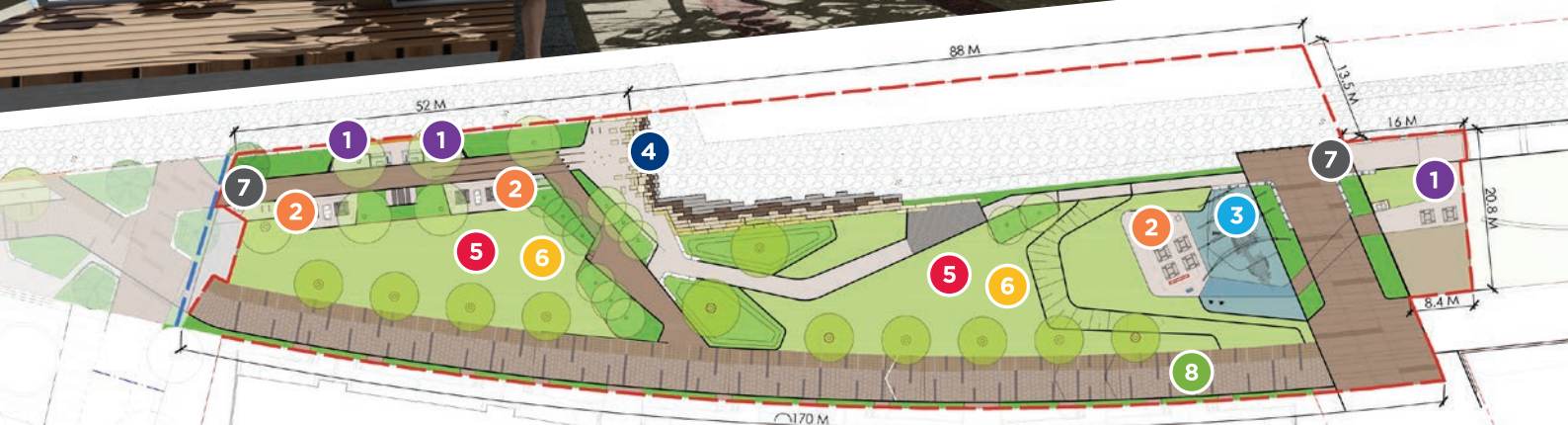
Honeysuckle continues to come to life with new and invigorating places and spaces that enhance the natural and built environment for everyone to enjoy.

Honeysuckle Park will mark a significant step in the delivery of a new public domain and the continued revitalisation of the Honeysuckle waterfront. It is a step towards completing the magnificent 11km stretch of community pathways and connections from Throsby Creek to Bathers Way.

The construction of Honeysuckle Park is one of HCCDC's key projects delivering a waterfront park in the city centre. HCCDC recently completed construction of new seawalls and is currently upgrading Honeysuckle Drive which is due to finish by the end of the year.



Hunter & Central Coast
Development
Corporation



- 1 Bench seating
- 2 Shaded seating & BBQ facilities
- 3 Children's play area
- 4 Seating steps
- 5 Lawn
- 6 Recreational spaces
- 7 Waterfront promenade
- 8 Shared footpath

AT A GLANCE



Shared footpath and cycleway



BBQ shelters and picnic seating



Sandstone steps at the water's edge



Waterfront seating



Shaded recreational spaces



Native trees and plants



Maritime themed play space



Spaces for Everyone

Honeysuckle Park has been designed with residents and the community in mind, with public domain areas to feature family-friendly interactive play elements, recreational spaces, greater connection to the water and places to meet and relax with family and friends.



Timing

Preliminary works are now underway and construction is anticipated to commence in October.

The completed park will be opened in the first half of 2021.



Feedback

If you have any questions about Honeysuckle Park, please contact HCCDC via:

Phone: 4904 2750

Email: honeysuckle@hccdc.nsw.gov.au

HCCDC is looking forward to commencing construction of Honeysuckle Park. A construction contractor will soon be announced and you'll be provided more details about the project and have a dedicated contact person should you need to contact them.