

# THE STATION LANDSCAPING PROJECT

## Notification – July and August 2020

### Project overview

Daracon, on behalf of Hunter Central Coast Development Corporation (HCCDC) is undertaking landscaping works at The Station, in Newcastle's east end. The works extend the completed Market Street Lawn through to the former bus depot at Watt Street, create a Station Plaza and a vibrant new public space.

The work includes landscaping and planting, signage, interpretative elements, service connections and stormwater upgrades.

### Upcoming work

During July and August, Daracon will continue civil works and landscaping at the former bus depot site. Earthwork and installation of gravel throughout the site will be completed during the next two months (weather dependent). Concreting, and paving with granite and bluestone will continue to take shape. New precast planter boxes will be installed, and planting of garden beds will start.

Work to the footpath on Watt Street will take place and some pedestrian diversions may be in place during the work. It is anticipated to take approximately 5 weeks to complete.

In Watt Street, the lanes closest to the Station will be resurfaced and traffic control will be in place. Short delays may be experienced while the work is completed. Further information will be provided before work starts.

Traffic and pedestrian controls may be in place for work that is currently being completed by the City of Newcastle. For more information about Council's work, please contact 02 4974 2000.

### Work in July and August

Activities	Equipment to be used
<ul style="list-style-type: none"> <li>Minor demolition works, utility connections and removal of waste from site</li> </ul>	Heavy vehicles, light vehicles, cranes, excavators, mini loaders, vibratory compaction rollers, water cart, concrete cutters, jackhammer, concrete trucks and pumps, vacuum truck, handheld tools.
<ul style="list-style-type: none"> <li>Installation of raised planter beds and planting</li> </ul>	
<ul style="list-style-type: none"> <li>Earthworks, grading soil, installation of gravel, compacting and landscaping work</li> </ul>	
<ul style="list-style-type: none"> <li>Drainage, water infrastructure, electrical and cabling work. This could include the relocation of services.</li> </ul>	

**HEAD OFFICE**  
20 Kullara Close, Beresfield NSW 2322  
PO Box 401 Beresfield NSW 2322  
P 02 4974 9200

dgroup@daracon.com.au  
www.daracon.com.au

**SYDNEY**  
184 Adderley Street West, Auburn NSW 2144  
P 02 8799 2600

**HUNTER VALLEY**  
2 Kime Road, Mount Thorley 2330  
P 02 6574 0200

**GUNNEDAH**  
171 Blackjack Road, Gunnedah NSW 2380  
PO Box 767 Gunnedah NSW 2380  
P 02 6742 4977

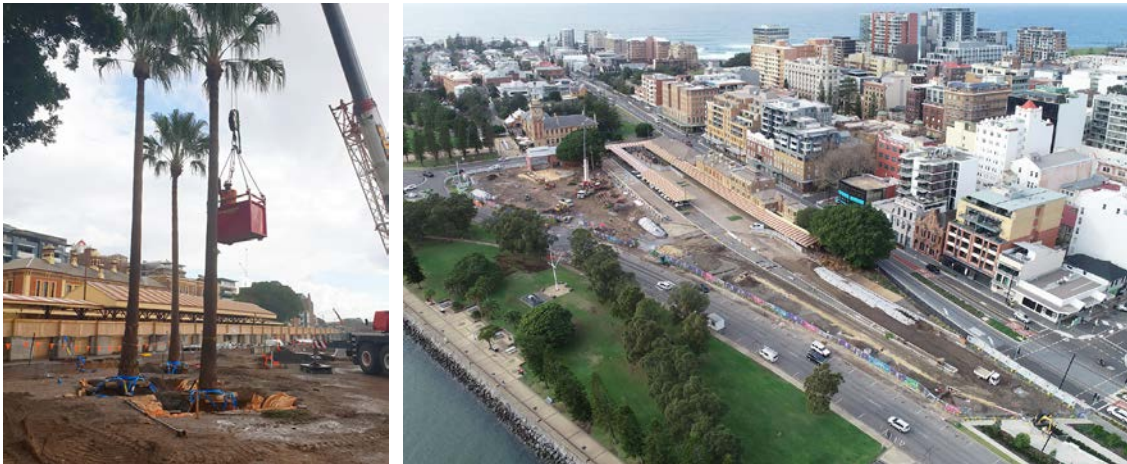
## Work hours

Standard work hours for the project are 7am to 6pm Monday to Friday. This is to minimise any disruption to events held at The Station and on nearby residents. If night work is required, a further notification will be provided to nearby residents and businesses.

## Working safely in industrial environments

It is not unusual to find contaminated materials around former rail corridors and in urban environments. We use precautionary measures to manage the potential of finding contaminated materials and will keep the community informed should any contamination be found. This means from time to time you may see signage, air monitoring, personal protective equipment including protective suits or other measures directed by an occupational hygienist.

## The Station landscaping project – Progress photo May 2020



**Images: Project area:** The Station public domain site is bordered by Wharf Road, Scott Street, Market Street Lawn and Watt Street. Over the last two months large palm trees and some pavement work has been completed, helping to define the new Station Plaza.

## Contact Daracon

For more information about landscaping improvements at The Station, please contact:

Phone: 1800 870 700

Email: [thestation@daracon.com.au](mailto:thestation@daracon.com.au)

Visit HCCDC's website for further information: <https://www.hccdc.nsw.gov.au/station-works>