

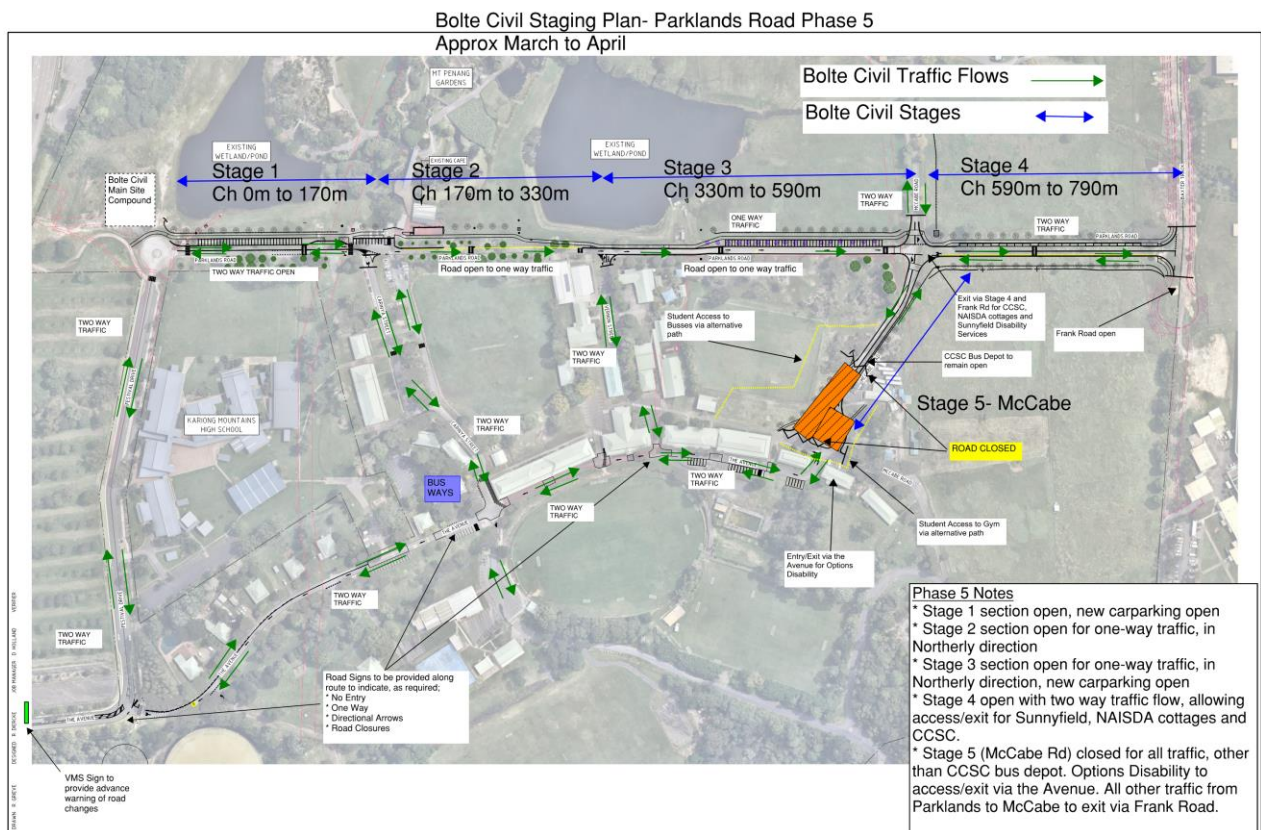
Construction of Parklands Road Upgrade

Notification – ADDITIONAL CONSTRUCTION UPDATE – February 2023

PROGRESS AND UPCOMING WORKS

The planned resurfacing works along Parklands Road are progressing well and we look forward to opening the new road in its entirety in early March. As the new roadworks are completed the traffic directions will be changed in some areas, which will be shown on site with new signage and new line making. The change to traffic conditions can be seen on the picture below, but summarised as follows;

- The section of Parklands Road between Festival Drive and Waterfall Café will be opened to two-way traffic with new parking bays available for use.
- The section of Parklands Road between Waterfall Café and McCabe Rd will be one way only in a Northerly direction, with new parking bays available for use.
- The new section of Parklands Road from McCabe Rd to Frank Road will be opened to two-way traffic with new parking bays available for use.
- The section of McCabe Road from the Bus Depot to The Avenue will be closed while the new Roadworks are being completed during March and April. During this phase traffic will need to exit Mt Penang precinct via Frank Road and onto Kangaroo Rd.



Parklands Road Opening



Please remember that over the next week there will be intermittent closures to various sections of Parklands Road as the works progress. Wherever possible these intermittent closures will occur between 9:00am and 3:00pm to minimise disruption for school related traffic. The closures will be accompanied by site signage, diversions and Traffic Control personnel as required for each section to clearly delineate how to navigate around Mt Penang Parklands.

We thank all stakeholders for their patience as the new works are being prepared for opening.

Contact

For more information about the Baxter Track or Parklands Road Upgrade works, please contact:

Nell Kimpton – *Communications Manager* Phone: 4351 1512 Email: nellk@boltecivil.com.au

For more information about the development, visit <https://www.hccdc.nsw.gov.au/mt-penang-works>